



**Make your designs
come true**



Drop-in



*You make
it happen*

Index

Passion for spaces 05	— Foodshields 23
— Tempting the appetite 07	— Glasses 25
— Acting efficiently and respectfully with the environment 10	— Refrigerated displays 27
— The widest range in the market 12	— Hot displays 29
— Refrigerated elements 15	— Additional elements 31
— Hot elements 17	— Accessories 33
— Show cooking elements 19	Electrical options 35
— Undercounter elements 21	Drop-in symbols 36



Passion for spaces

Fagor is a leading manufacturing brand specialized in cutting edge serving equipment for the modern hospitality industry.

Our aim is to design and create optimal spaces, with sophisticated visual identities, that connect with the emotions of the guests. The perfect frame to enjoy food.

Encastro is the new generation of drop-in elements that simplifies the design and construction of gastronomic areas.

Encastro elements are the best solutions to turn your projects into efficient foodservice spaces with unique personality.

With Encastro your designs become suggestive, accessible, comfortable, and safe spaces for the guest and simple, agile and efficient services for the operator.



Tempting the appetite

Large glass surfaces that create a sense of transparency.

LED lighting that enhances food presentation, creating a seductive experience that arouses the appetite of the most demanding guests.

Aesthetically consistent throughout whole the range to ensure the harmony of your projects.

Elegant design with a gentle touch

Encastro elements are the first visual impact that a guest receives at a restaurant. In addition to their functional and technical features, they play a key role as decorative objects.



Achieving the perfect service



Accesible spaces



Installation and maintenance



Best possible conditions

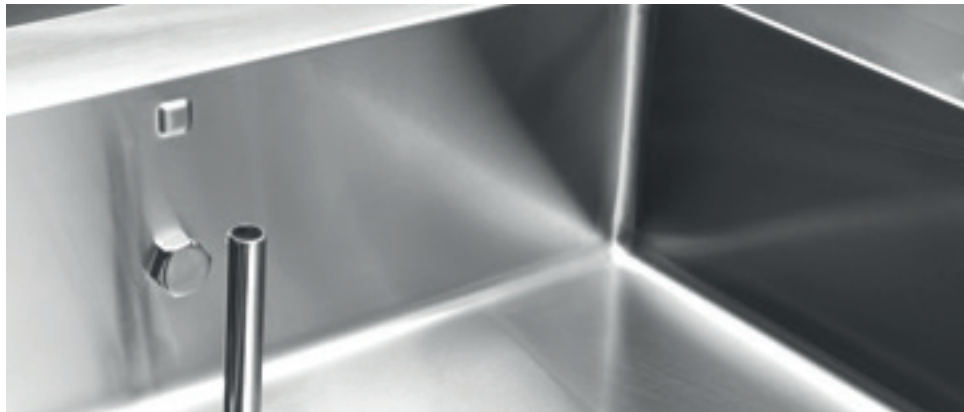


Achieving the perfect service

Greater accessibility for maximum hygiene.

180° hinged doors to make product loading and replacement operations easier.

Interior rounded edges to avoid dirt build-up. Separation between support and foodshield for a more comfortable and efficient cleaning.



New compressors

New compressors that reduce ambient noise, vibrations and heat in the dining room. Complete suppression of noise, vibration and heat possible by using Encastro remote group elements.



Accessible spaces

With its open and ergonomic design, Encastro elements guarantee easy and simple access to the products on display, resulting in faster and more agile dining services.

Encastro elements are also tremendously compact and precise, ensuring an optimum usage of space in the dining room.





Installation and maintenance

Removable control panel that can be placed in any position.

All electronic components in single, easy-to access point.

Foodshield brackets are fixed to the worktop without difficulty by using screwing plates underneath. Foodshield brackets also have clamps to hold the glass at its top effortlessly.

Foodshields serve as anti-breath and/or anti-vapor elements, to illuminate and/or heat food on display.



Digital Thermostat:

Protected by the structure perimeter, avoiding hindrances in their daily use.

With 1-meter long cable, could be installed in another position.

Allows turning on, at the same time, refrigerated element and foodshield with light.



Best possible conditions

The main technical function of Encastro elements is to keep the temperature of the food and beverages on display outside the limits of the danger zone, in which food-borne bacteria can grow.

Encastro ventilated elements ensure greater freshness for foods on display.



Safe zone cold
Less than 8°C

8°C



Danger zone
bacteria food
poisoning

< X <



Safe zone hot
More than 65°C

65°C

Acting efficiently and respectfully with the environment

- New, more efficient refrigeration components that allow energy savings of more than 20%.
- Polyurethane insulation with ecological, CFC-free injection and high-density 40 kg/m³.
- Bain-marie elements with automatic filling function and level detector to save water.
- Refrigerant gas with low global warming potential.
- Compliance with european directives on waste Electrical and Electronic Equipment (WEEE). Actively recycling to reduce environmental pollution.



The widest range in the market

01

Refrigerated elements. Ventilated or by contact: static, 30-80-115-160 mm well depths, from 2 to 6 GN 1/1. Versions with remote group.

02

Refrigerated displays. Cubic or curved, ventilated or static well, wall-mounted or with rear access, 3 or 4 shelves, from 2 to 6 GN 1/1. Versions with remote group.

03

Hot elements. Glass ceramic plate, dry or water bain-marie, from 1 to 6 GN 1/1.

04

Hot displays. Black or white glass ceramic plate, cubic or curved, wall-mounted or with rear access, from 3 to 6 GN 1/1.

05

Many foodshield options with squared or rounded glasses and brackets, LED or halogens or ceramics, from 2 to 6 GN 1/1.

06

Drop-in options. All elements could be dropped in to the worktop level or even on top of the worktop to make a robust structure with a 13 mm thick overlap.





SALAD BAR



Refrigerated elements



- Ranges of 720 or 610 mm wide.
 - Elements from 2 to 6 GN 1/1 (except for CMC and CHMP).
 - Wells with 30, 80 and 160 mm depth.
 - Top plates with 1 or 2 levels.
- Elements with static or ventilated refrigeration.
 - All static refrigerated elements include an evaporation system for defrost water as a standard option.



PR7 | PR6 | P2R7 | P2R6
1 or 2 level static refrigerated top plate.



CR7-30/80/160 | CR6-30/80/160
Static refrigerated well 30, 80 or 160 mm depth.



CRV7
Ventilated refrigerated well with adjustable depth.



CMC7-4 | CMC6-4
Frozen products well. Capacity for 4 ice cream containers.



CNH7-80/120 | CNH6-80/120
Neutral ice well 80 or 120 (option with light) mm depth.



CHMP-450
Neutral champagne station.



Hot elements



- Ranges of 720 or 610 mm wide.
- Elements from 2 to 6 GN 1/1 (except for OS1). Wet bain marie wells 1GN 1/1 included.
- Black or white glass ceramic plates, with frame or frameless.

- Different types of heat in wells. Dry ventilated and water.
- Dry or wet bain marie wells, with automatic or manual filling.



PV7 | PV6 | PV7-W | PV6-W
Black or white glass ceramic plate.



PVE11 | PVE11-W
Black or white frameless glass ceramic plate.



OS1-10
Soup well.



CBMS7 | CBMS6
Dry bain marie well.



CBMA7 | CBMA6 | CBMAA7 | CBMAA6
Wet bain marie well with automatic or manual filling.



New

Showcooking elements



TPY7-2 | TPY6-2
Ice cream teppanyaki (2GN).



CRE7-80 | CRE6-80
Fresh product showcase well (1 or 2 GN 1/1).



TRCBMA7 | TRCBMA6
Carving station (1 or 2 GN 1/1).



PV3 | PV3-W
Show cooking black or white glass ceramic plate (2 - 5).



CBMA16 | CBMS16
Dry or wet bain marie well for sauces (3 or 4 GN 1/6).



PVEP-530
Paella display plate.



New

Undercounter elements



PBCF
Undercounter refrigerated plate
(2 - 6 GN 1/1).



PBCC
Undercounter hot plate
(2 - 6 GN 1/1).



Foodshields



- Oblong or rectangular bracket range.
- Foodshields from 2 to 6 GN 1/1.
- Light and heat foodshields for refrigerated and hot elements of the range.
- Neutral brackets for glasses.



IPL | IPL-R | IPM-4 | IPM-R-4
Foodshield with light.



IPC | IPC-R
Foodshield with halogen heat.



IPC C | IPC-R C
Foodshield with ceramic heat.



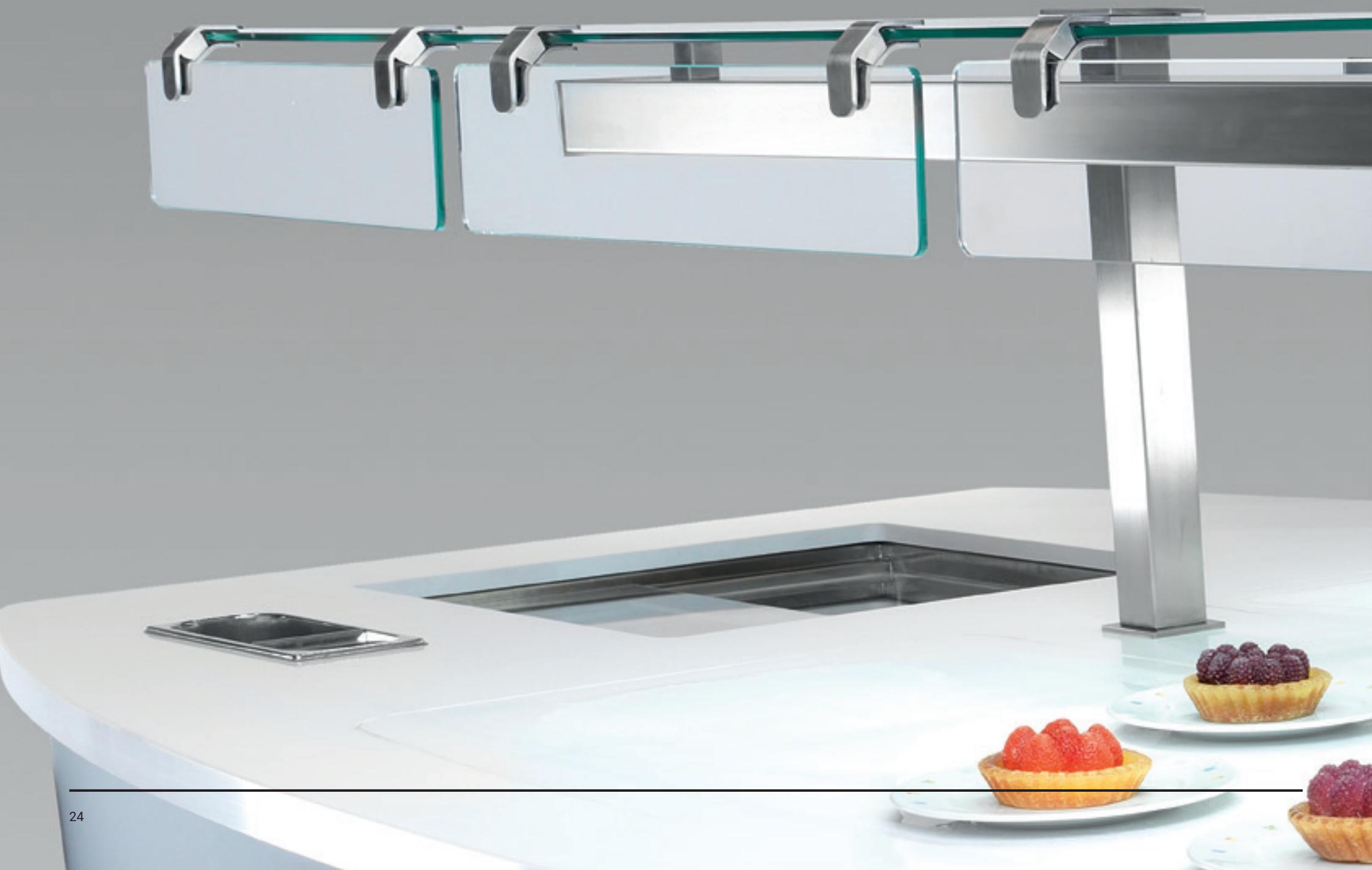
ISPC | ISPC-R
Neutral bracket for central, frontal or closed glasses.



ISPCF-L | ISPCF-L-R | ISPCF-C | ISPCF-C-R
Bracket for frontal protection glass.



IPMC | IPMC-R
Heating lamp.



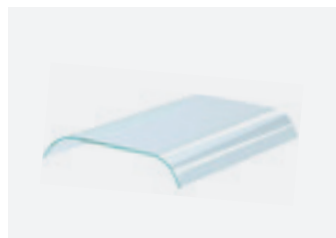
Glasses



- Tempered glasses, curved or straight.
- Elements from 2 to 6 GN 1/1.
- Frontal, central or closed frontal glasses.



ICC-1C | ICC-R-1C
Frontal glass



ICC-2C | ICC-R-2C
Central glass



ICC-FP | ICC-R-FP
Closed frontal glass



IDFG
Frontal protection glass for
brackets



Refrigerated displays



- Cubic or curved displays.
- Elements from 2 to 6 GN 1/1.
- 3 or 4 level for cubic refrigerated ventilated displays.
- Display models with different public side closures (open, closed with glass, with roll-up textile curtain or venetian blinds) and different service side closures (folding doors or perforated polished stainless steel backside)



VCR7 | VCRM7 |
VCR7-4 | VCRM7-4
Cubic refrigerated ventilated display.



VVR7 | VVRM7
Curved refrigerated ventilated display.

c'classique

par sodexo



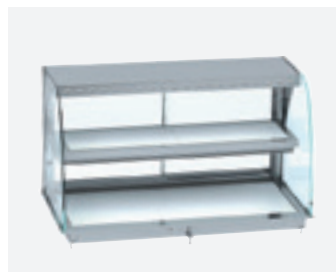
Hot displays



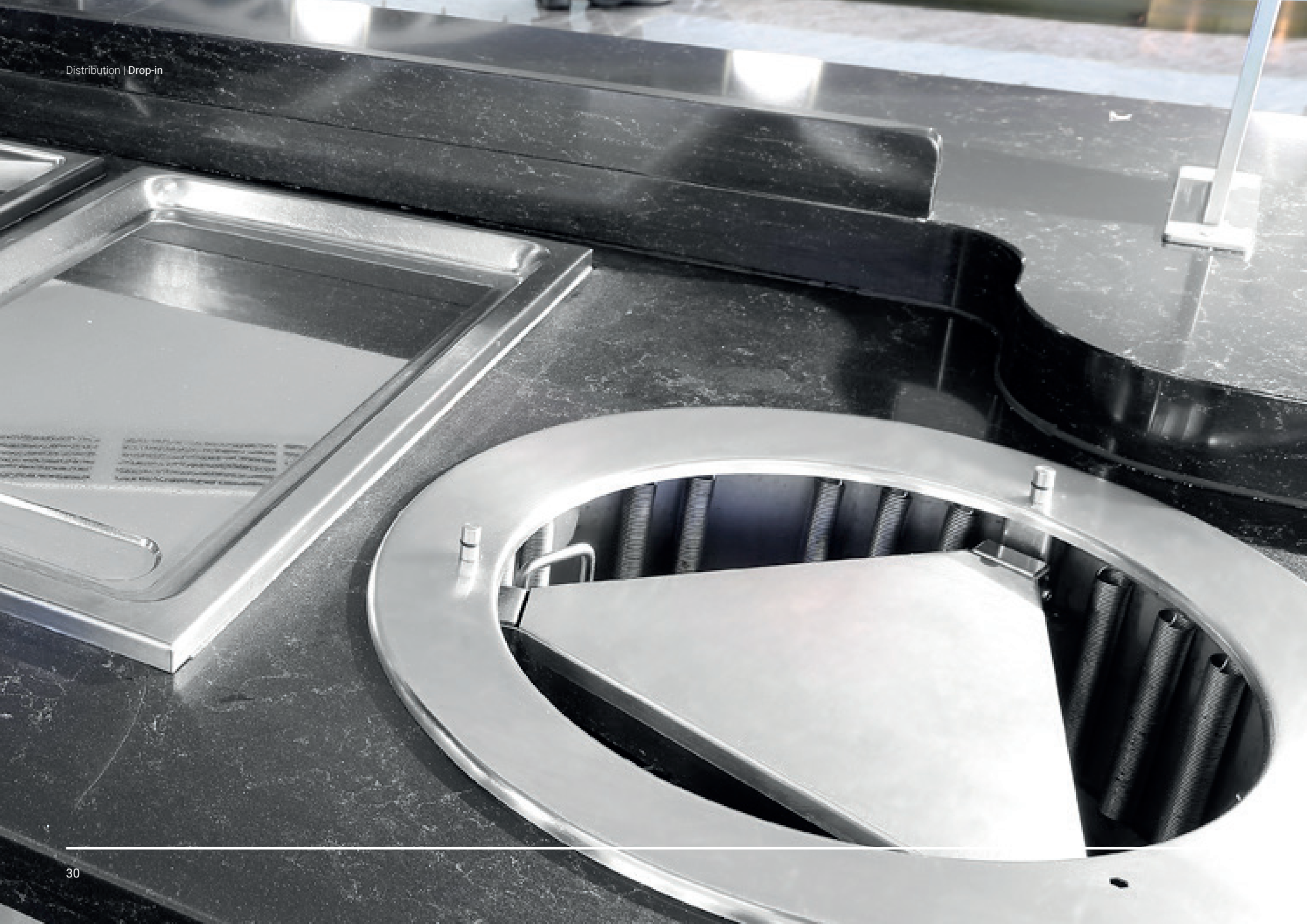
- Ranges of 720 or 610 mm wide and elements from 3 to 6 GN 1/1.
- Black or white glass ceramic plates.
- Curved or cubic models.
- Displays with different service side closures (sliding doors or perforated polished stainless steel backside).



**VCC7 | VCC6 | VCC7-W |
VCC6-W | VCCM7 | VCCM6 |
VCCM7-W | VCCM6-W**
Cubic black or white glass
ceramic display.



**VVC7 | VVC6 | VVC7-W |
VVC6-W | VVCM7 VVCM6 |
VVCM7-W | VVCM6-W**
Curved black or white glass
ceramic display.



Additional accessories



- GN 1/1, GN 2/1 cold and hot reserves.
- Two different models depending on height. Models for 1,2 or 3 doors (D) and 2,4 or 6 drawers (H).
- Neutral or hot plate and basket dispensers.
- Showcase displays from 2 to 4 GN 1/1, models with or without bottom or intermediate shelf. With light or heat. Open or front closure.



RF4 | RF5
GN 1/1 or GN 2/1 cold reserve.



RCD4 | RCD6
Hot reserve.



KCRF
Kit 2 GN 2/1 or GN 1/1 drawers to replace a door.



IDPC | IDPN
Neutral or hot plate dispenser.



IDCN
Basket dispenser.



**VEC | VEC-CE | VE-CE | VE-EI |
VE-CE-CB-EI**
Neutral or hot showcase display.



Accessories



ICLP
Dipper well for ice cream frozen well.



FV-VIT
Stainless steel frame support for glass ceramic elements.



EI
Intermediate shelf for showcase displays.



ITDP
Neutral cover for plate dispensers.



IPCIC | IPCTD | IPCTI | IPCTD-C | IPCTI-C
Digital thermometer kit for fooshields.



KUV
Germicidal lamp for wells and displays.



EV-KIT
Evaporation kit defrost water from 2 to 6 GN 1/1.



OF-PAN
Overflow pan for defrost water.



PAL-DROPIN
Tool to lift technical elements.



Electrical options

Hot elements

230V 1N 50/60 Hz elements.

400V 3N 50/60 Hz elements.

Refrigerated elements

CLIMATE CLASS III AND IV

230V 1N 50 Hz elements.

230V 1N 60Hz elements.

CLIMATE CLASS V

230V 1N 50 Hz (TR) elements.

230V 1N 60 Hz (TR) elements.

REMOTE COLD GROUP

Remote cold group elements.

Drop-in symbols

Refrigerated elements



Static refrigeration

Static well refrigeration system by expanded copper coil located in its base.

PRX - P2RX - CRX - CMCX - TPYX - CREX - PBCF



Evaporation system for defrost water

All static refrigerated elements include an evaporation system for defrost water as a standard option

PRX - P2RX - CRX



Ventilated refrigeration

These elements have a ventilated cooling system which creates a constant flow of chilled air coming from the evaporator fans.

CRV7 - VCR7 - VCRM7 - VVR7 - VVRM7

Hot elements



Dry heating system

Generated by a set of resistor modules with fans that create a dynamic flow of hot air inside the well.

CMBSX - CBMS16 - RCDX



Water heating system

With hidden silicon resistors attached to the bottom of the well.

CBMAX - CBMAAX - TRCBMAX - CBMA16



Dual-heat system

Lighting by protected halogen lamps (100W per halogen) and heating by high temperature, infrared ceramic elements (250W per ceramic element).

VCCX - VCCMX - VVCX - VVCMX

Foodshields and showcase displays



LED lighting

LED light to improve presentation.

CNHX-120 - VE-CE - VE-EI - VE-CE-CB-EI - IPL - IPL-R - IPM-4 - IPM-R-4



Halogen heat

Light and heat with protected halogen lamps.

IPC - IPC-R - IPMC - IPMC-R - VEC - VEC-CE



Rectangular bracket

Rectangular bracket range.

IPL - IPM-4 - IPC - IPMC - IPC C - ISPC - ISPCF-L - ISPCF-C



Ceramics heat

High temperature option with alternating infrared ceramics.

IPC C - IPC-R C



Oblong bracket

Oblong bracket range.

IPL-R - IPM-R-4 - IPC-R - IPMC-R - IPC-R C - ISPC-R - ISPCF-L-R - ISPCF-C-R

Glasses



Front straight glass
Tempered glasses, front and straight.
ICC-R-1C



Front curved glass
Tempered glasses, front and curved.
ICC-1C



Closed straight glass
Tempered glasses, closed, front and straight.
ICC-R-FP



Central straight glass
Tempered glasses, central and straight.
ICC-R-2C



Central curved glass
Tempered glasses, central and curved.
ICC-2C



Closed curved glass
Tempered glasses, closed, front and curved.
ICC-FP

Displays



Open displays
Display models with an open public side closure.



Closed displays
Display models with a closed public side closure.
(CE).



Folding doors displays
Refrigerated displays with hinged 180° opening folding doors according to their service side closure.
VCR7 - VCR7-4 - VVR7



Sliding doors displays
Static or hot displays with sliding doors according to their service side closure.
VCCX - VVCX



Wall-mounted displays
Displays with perforated polished stainless steel backside according to their service side closure.
VCRM7 - VCRM7-4 - VVRM7 - VCCMX - VVCMX



Curtain displays
Display models with roll-up textile curtains in public side closure (CT).



Venetian blinds displays
Display models with venetian blinds with lock in public side closure (CP).



ONNERA GROUP

