



Catalogue :

OTHER REFRIGERATION

Chapter :

DISPLAY TRAYS

Article :

VTP-139 P Incorporated Flat Negro 230V 1

Code:

19005188

| <u>DIMENSIONS AND WEIGHTS</u> | | <u>Net dimensions</u> | <u>Packed</u> |
|-----------------------------------|------------------------|-----------------------|----------------------|
| Length | mm | 1.380,00 | 480,00 |
| Depth | mm | 415,00 | 1.440,00 |
| Height | mm | 278,00 | 480,00 |
| Weight | kg | 45,00 | 46,00 |
| Volume | m3 | 0,16 | 0,33 |
| <u>ELECTRICITY</u> | | 50Hz | |
| | 230V | | |
| | Power | | 0,18 kW |
| Connections | 230 V. 1+N+T | 2X1,5+T - 2 A | |
| | 230 V. III+T | 3X2,5+T - 20 A | |
| | 400 V. III+N+T | 4X2,5+T - 16 A | |
| <u>GAS</u> | Not necessary | | |
| <u>WATER</u> | Not necessary | | |
| <u>STEAM</u> | Not necessary | | |
| <u>AIR</u> | Not necessary | | |
| | | | R-134a |
| | Refrigeration power | | 0,178 |
| | Climat class | 4 | |
| <u>SOUND LEVEL</u> | | | < 65,00 db |
| <u>CERTIFICATES</u> | SGS-2103-0906-1 | | |
| <u>INSTALLATION - CONNECTIONS</u> | | | Ø |
| | ► ELECTRICITY | SI | |

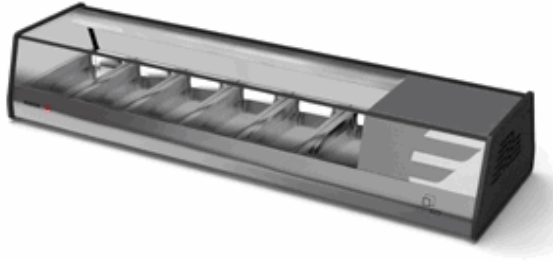
DESCRIPTION

OVER COUNTER DISPLAY CASES, VTP-139 P

SPECIFICATIONS

High quality austenitic stainless steel inner tray.
Anodized aluminium outside panels. Glass with PVC on the sides.
Curved glass cover (one piece) or flat cover (two pieces) and glass sliding doors.
40 kg/m3 injected polyurethane isolation. CFC free.
It can fit GN -1/3, 40 mm deep containers. The containers are included in the standard equipment.
The cooling unit may be inside or outside the room and can be placed at a distance from the cabinet.
Remote cooling unit versions include the cooling unit as part of the standard equipment. Its dimensions are 310 x 360 x 240 mm and the maximum distance to the cabinet is 1.5 m.
Cold plate with copper tube evaporator.
Emergency waste water drainage.
Electronic thermostat for temperature control.
Shielded inner lighting system.
Lighted power switch.
Working temperature: +4 °C, +8 °C (Room temperature: 32 °C).

Glass type: Flat
Containers capacity: 6*GN 1/3
Cooling unit type: Built-in
Electricity consumption: 174 W
Coolant: R-134a
Dimensions: 1.380x415x278 mm



Catalogue :
OTHER REFRIGERATION

Chapter :
DISPLAY TRAYS

Article :
VTP-139 P Incorporated Flat Negro 230V 1

Code :
19005188

SCHEMA - DIMENSIONS

