

Catalogue :  
**OTHER REFRIGERATION**

Chapter :  
**DISPLAY TRAYS**

Article :  
**VTP-139 C Incorporated Curve Negro 230V**

Code:  
**19005183**

<u>DIMENSIONS AND WEIGHTS</u>		<u>Net dimensions</u>	<u>Packed</u>
Length	mm	<b>1.380,00</b>	<b>480,00</b>
Depth	mm	<b>415,00</b>	<b>1.440,00</b>
Height	mm	<b>278,00</b>	<b>480,00</b>
Weight	kg	<b>45,00</b>	<b>46,00</b>
Volume	m3	<b>0,16</b>	<b>0,33</b>

<u>ELECTRICITY</u>	<b>230V</b>	<b>50Hz</b>	
Power			<b>0,18 kW</b>
Connections	230 V. 1+N+T	<b>2X1,5+T - 2 A</b>	
	230 V. III+T	<b>3X2,5+T - 20 A</b>	
	400 V. III+N+T	<b>4X2,5+T - 16 A</b>	

GAS Not necessary

WATER Not necessary

STEAM Not necessary

AIR Not necessary

Refrigeration power **R-134a**  
**0,178**

Climat class **4**

SOUND LEVEL **< 65,00 db**

CERTIFICATES **SGS-2103-0906-1**

INSTALLATION - CONNECTIONS **Ø**  
▶ ELECTRICITY **SI**

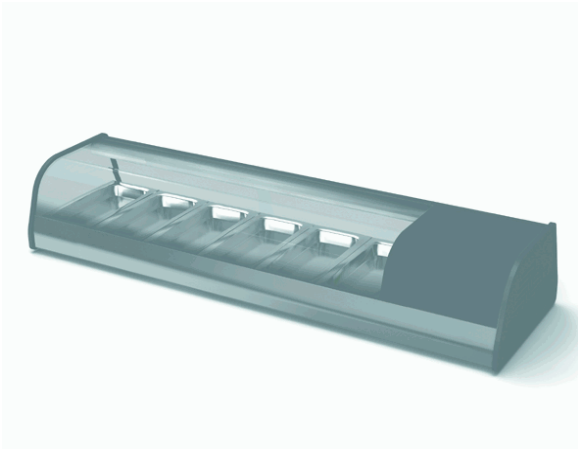
DESCRIPTION

OVER COUNTER DISPLAY CASES, VTP-139 C

SPECIFICATIONS

High quality austenitic stainless steel inner tray.  
Anodized aluminium outside panels. Glass with PVC on the sides.  
Curved glass cover (one piece) or flat cover (two pieces) and glass sliding doors.  
40 kg/m3 injected polyurethane isolation. CFC free.  
It can fit GN -1/3, 40 mm deep containers. The containers are included in the standard equipment.  
The cooling unit may be inside or outside the room and can be placed at a distance from the cabinet.  
Remote cooling unit versions include the cooling unit as part of the standard equipment. Its dimensions are 310 x 360 x 240 mm and the maximum distance to the cabinet is 1.5 m.  
Cold plate with copper tube evaporator.  
Emergency waste water drainage.  
Electronic thermostat for temperature control.  
Shielded inner lighting system.  
Lighted power switch.  
Working temperature: +4 °C, +8 °C (Room temperature: 32 °C).

Glass type: Bended  
Containers capacity: 6\*GN 1/3  
Cooling unit type: Built-in  
Electricity consumption: 174 W  
Coolant: R-134a  
Dimensions: 1.380x415x278 mm



Catalogue :  
**OTHER REFRIGERATION**

Chapter :  
**DISPLAY TRAYS**

Article :  
**VTP-139 C Incorporated Curve Negro 230V**

Code :  
**19005183**

**SCHEMA - DIMENSIONS**

