

Catalogue :
OTHER REFRIGERATION

Chapter :
DISPLAY TRAYS

Article :
VTP-139-CS Incorporated Curve Negro 230V

Code:
19005179

<u>DIMENSIONS AND WEIGHTS</u>		<u>Net dimensions</u>	<u>Packed</u>
Length	mm	1.380,00	480,00
Depth	mm	415,00	1.440,00
Height	mm	278,00	480,00
Weight	kg	45,00	46,00
Volume	m3	0,16	0,33
<u>ELECTRICITY</u>		50Hz	
	230V		
	Power		0,18 kW
Connections	230 V. 1+N+T	2X1,5+T - 2 A	
	230 V. III+T	3X2,5+T - 20 A	
	400 V. III+N+T	4X2,5+T - 16 A	
<u>GAS</u>	Not necessary		
<u>WATER</u>	Not necessary		
<u>STEAM</u>	Not necessary		
<u>AIR</u>	Not necessary		
			R-134a
	Refrigeration power		0,178
	Climat class	3	
<u>SOUND LEVEL</u>			< 65,00 db
<u>CERTIFICATES</u>	SGS-2103-0906-1		
<u>INSTALLATION - CONNECTIONS</u>			Ø
	► ELECTRICITY	SI	

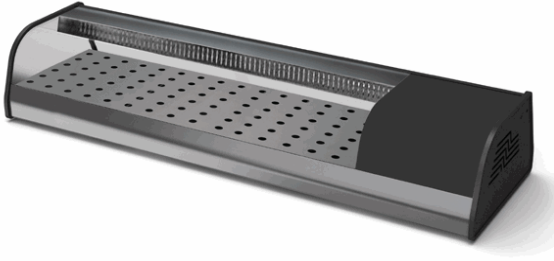
DESCRIPTION

OVER COUNTER DISPLAY CASES, VTP-139 C - SUSHI

SPECIFICATIONS

Perforated stainless steel inner tray for food.
Anodized aluminium outside panels. Glass with PVC on the sides.
Curved glass cover and glass sliding doors.
40 kg/m3 injected polyurethane isolation. CFC free.
Static cooling system.
Double built in evaporation system by means of bottom tray and a copper pipe on the surface of the curved glass cover.
Emergency waste water drainage.
Electronic thermostat for temperature control.
Shielded inner lighting system.
Lighted power switch.
Working temperature: -1 °C, +2 °C (Room temperature: 27 °C).

Glass type: Bended
Cooling unit type: Built-in
Electricity consumption: 174 W
Coolant: R-134a
Dimensions: 1.380x415x278 mm



Catalogue :
OTHER REFRIGERATION

Chapter :
DISPLAY TRAYS

Article :
VTP-139-CS Incorporated Curve Negro 230V

Code :
19005179

SCHEMA - DIMENSIONS

