

Catalogue
CATERING
Chapter
COOKING

Model
C-E940 380-415V 3N

19031220

14/12/2018

4-HOT PLATES ELECTRIC BOILING TOP, C-E940

Electric top plates are adequate for a variety of containers such as pans, saucepans, etc.

Depending on the container, you may stew, boil, make soup, legumes, scrambled eggs, fried dishes...

2 mm stainless AISI-304 steel embedded top with rounded edges for easy cleaning.

Laser cut and automatic welding for a perfect side to side adjustment of modules with square angle finish.

4 kW power 300 x 300 mm cast iron heating plates tight adjusted to the embedded top stove.

Number of plates: 4.

Power adjustment by 7-position knob. Independent safety thermostat for each plate.

Inner fan to reduce the temperature of the components.

Water-tight and protecting-support controls.

High temperature protector for the chimney made of enamelled cast iron.

Front access to components.

According to European standards for components and panels temperature, efficiencies and combustion, and sanitary regulations (EN-60335 and EN-203)

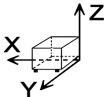
IPX5 grade water protection equipment.

Maximum power: 16.0 kW

Dimensions: 800 x 930 x 290 mm.

DIMENSIONS

X Width	800 mm	X Gross width	840 mm
Y Depth	930 mm	Y Gross depth	1022 mm
Z Height	290 mm	Z Gross height	535 mm
Net Weight	85,0 kg	Gross Weight	101,0 kg
Net volume	0,222 m3	Gross volume	0,459 m3



ELECTRICITY TECHNICAL SPECIFICATIONS

Electric power	16,000 kW
Heating power	16,00 kW
Voltage	380-415V - 3N
Amperage	32A
Electric frequency	50/60Hz

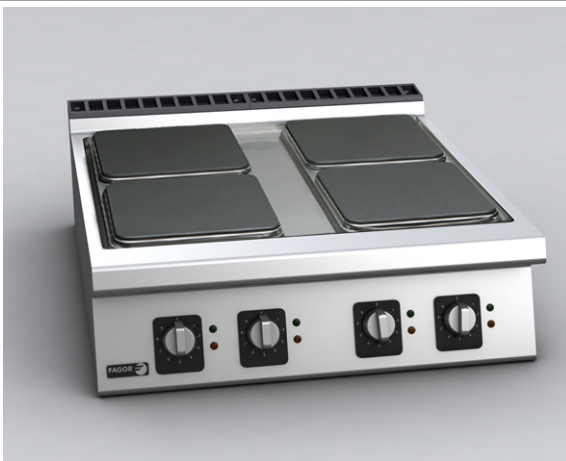
Catalogue
CATERING

Chapter
COOKING

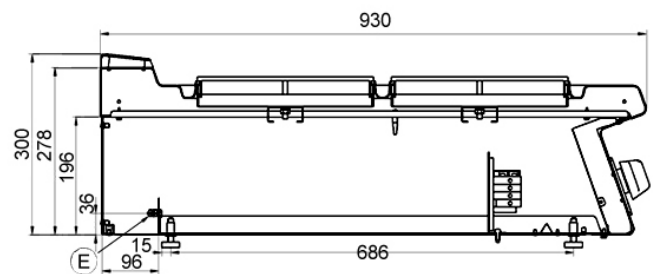
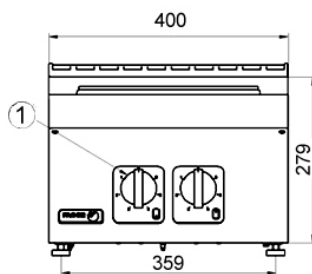
Model
C-E940 380-415V 3N

19031220

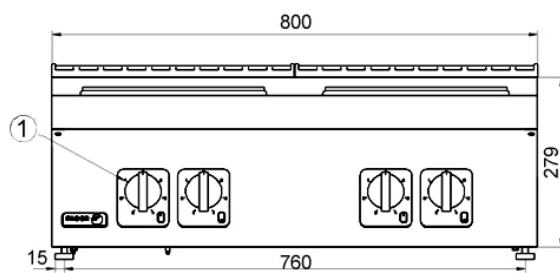
14/12/2018



C-E920



C-E940



E. Conexión eléctrica
1. Mando placas M

Electrical connection
M plates control