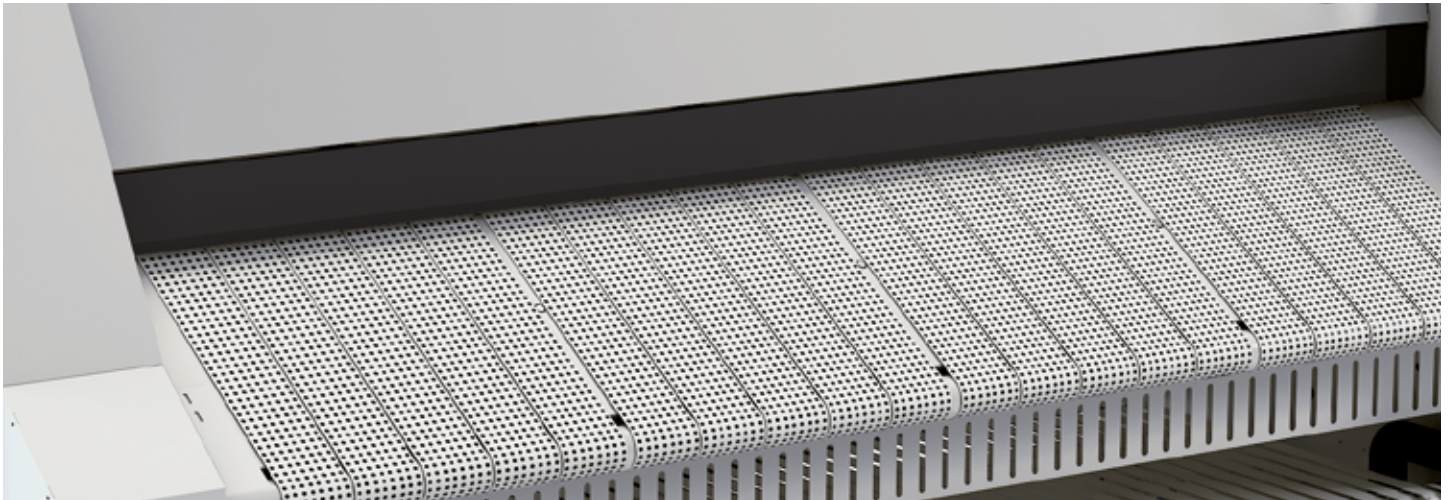




LAUNDRY

COMPACT FLATWORK
IRONERS AND FOLDERS



WIDE RANGE OF COMPACT MACHINES
FOR ALL TYPE OF BUSINESS





INDEX

WIDE RANGE OF COMPACT MACHINES
FOR ALL TYPE OF BUSINESS

04

COMPACT DESIGN WITH HIGH
PERFORMANCE AND OCCUPYING
MINIMUM SPACE

06

RENOVATED AND REDESIGNED
TO OFFER THE TOP PERFORMANCE

08

COMPACT FLATWORK IRONERS

10

FOLDERS

11

PHOENIX

12

POSEIDON AND POLARIS

14

TECHNICAL DATA

16



Phoenix



Poseidon



Polaris



Folders

WIDE RANGE OF
COMPACT MACHINES FOR
ALL TYPE OF BUSINESS.

FAGOR INDUSTRIAL presents a wide range of compact flatwork ironers, a perfect and **innovative solution for the drying, ironing and folding of the flatwork**, for all type of customers. Models with lengthfold, crossfold and stacker and the choice of rear or front delivery, offer great flexibility to adapt to all type of needs and uses.

Fagor ironers are conceived to offer **the best performance and productivity with noticeable energetic efficiency and time-saving**. Their easy operation makes the maintenance costs almost non-existent.

The gas heated models with new **radiant burner increase energy efficiency and production by 25%** compared to ironer with atmospheric gas burner.

The ironing quality from Fagor machines is well known by the users and considered one of the strong points.



COMPACT DESIGN
WITH HIGH
PERFORMANCE AND
OCCUPYING
MINIMUM SPACE



RENOVATED AND REDESIGNED TO OFFER THE TOP PERFORMANCE

The range of compact flatwork ironers with roll diameters 600, 800 and 1.000mm has been renovated and redesigned to offer the top performance. These machines, with their compact design, offer important space-saving in the laundries which need to process a big quantity of flatwork. **One can iron up to 290 kg/h in less than 27 sqm.**

With the latest roll diameter 1.000mm models, the output of these machines has allowed an important increase, being ideal for laundries in hospitals, hotels, etc. which need to process daily up to 9 tons, with minimum space and staff requirements.

Another new feature is the roll length of 3.300mm, which **allows the ironing and folding of linen with sizes 3.300 x 3.300mm**. FAGOR has also developed a new touch-screen control. This new control makes an easy and intuitive use of the machine, with a big flexibility to adjust any of the ironing or folding parameters.

One of the advantages of these machines is the mural conception, so the flat linen can be introduced and collected from the front (side stacker in PHOENIX), therefore saving a lot of space in the laundry. If the customer wishes a back collection, they can also work as pass-through machines.



DRYING



IRONING



LENGTH FOLD



CROSSFOLD



STACKER

COMPACT FLATWORK IRONERS

UP TO 290 KG

This range is organized in three basic models with their several options depending on capacity (diameter 600, 800 and 1.000mm and length 2.600 and 3.300mm) and heating type (electric, gas and steam).

PHOENIX



It is the most complete of the models, it allows to dry, iron, fully fold (length and cross) and stack the linen in one or two lanes. This can be done by a single operator.

- 2 Length folds.
- 3 Crossfold.

POSEIDON



This ironer dries, irons and makes up to two length folds in 1 or 2 lanes.

- 2 Length folds.

POLARIS



This is a less complex machine, it dries and irons the flatwork, without any folding.

- Drying and ironing.

RANGE	TYPE OF FOLDING	ROLL DIAMETRE (mm)	HEATING	ROLL LENGTH (mm)	
				2600	3300
PHOENIX	2 LENGTH FOLDS 3 CROSSFOLDS STACKER	600	Electric, gas and steam	PHOENIX 60/260	PHOENIX 60/330
		800	Electric, gas and steam	PHOENIX 80/260	PHOENIX 80/330
		1000	Electric, gas and steam	PHOENIX 100/260	PHOENIX 100/330
POSEIDON	2 LENGTH FOLDS	600	Electric, gas and steam	POSEIDON 60/260	POSEIDON 60/330
		800	Electric, gas and steam	POSEIDON 80/260	POSEIDON 80/330
		1000	Electric, gas and steam	POSEIDON 100/260	POSEIDON 100/330
POLARIS	WITHOUT FOLDING SYSTEM	600	Electric, gas and steam	POLARIS 60/260	POLARIS 60/330
		800	Electric, gas and steam	POLARIS 80/260	POLARIS 80/330
		1000	Electric, gas and steam	POLARIS 100/260	POLARIS 100/330

FOLDERS

SMARTY

There are two versions of this model: la SMARTY y la SMARTY MINI, more compact format.



The SMARTY folder for small and medium sized linen such as napkins or small towels is designed to function independently, or connected to the back of a big folder or one of our compact Ironers with back exit like: POSEIDON or PHOENIX.

FEATURES

- Maximum Production around 900/1200 pieces/hour.
- Maximum linen size for SMARTY and SMARTY ECO is 570 x 1.000mm; for SMARTY MINI is 570 x 600mm.

- Working table with vacuum unit.
- PLC microprocessor which allows to adapt to the piece size, up to 20 programs.
- Alarms and messages in the display.
- Transport belts in rubber and cotton.
- Partial or total piece counter.

TOWEL FOLDER	1 Lanes	LIBRA
		3 Lanes
FOLDER FOR SMALL AND MEDIUM SIZED LINEN SUCH AS NAPKINS OR SMALL TOWELS	Standard	SMARTY
	Mini	SMARTY MINI

PHOENIX

COMPACT FLATWORK IRONERS

PHOENIX ironers are the only compact machines **which can feed, dry, iron, fold and stack the flatwork in a single operation.** It is a real revolution in those laundries which do not have a big room but need to process large quantities of flatwork. These machines do not need more than 27 sqm to be able to work at its best, thanks to their compact and front feed and return design.



ALL OPERATIONS IN MINIMUM SPACE AND WITH ONLY ONE MACHINE

There is an option for these models, an automatic clamp feeder, which allows a single operator to use the machine.

The linen is folded and collected in the side stacker, and for smaller pieces another machine can be attached, which is a napkin folder, so the operation is easier and the output can be increased.

FEATURES

- Roll sizes: 2600 and 3300 mm long and diameter 600, 800 and 1000 mm.
- Panels in painted steel.
- One or two working lanes: one lane for bedsheets and two lanes for tablecloth and smaller pieces.
- Length fold (1 or 2 folds) and crossfold (up to 3 folds).
- Folding system by photocells and compressed air.

- Two types of linen stacker, with possibility to program the number of items stacked. The stacker can be positioned on either side of the machine.

- Frequency control.
- Feeding and ironing belts are Nomex.
- Touch-screen control: programs can be created with speed control (between 3 and 18 mts/min), temperature and folding parameters.
- Big output capacity, depending on the residual moisture of the linen, up to 290 kg/hour directly from the high spin washer extractor.
- Electric, gas or steam heating.
- Standard new radiant burner in 1000 mm diameter roll models.
- Powerful exhaust system.

OPTIONS

- Automatic 1 lane clamp feeder with vacuum feeding belts.
- Small pieces back collector: 2 or 4 lanes.
- Vacuum table to help the linen feeding.
- Partial By pass, so different programs can be used in each of the 2 working lanes.
- Linen reject system.
- Double air pressure in length folds for thicker linen.
- New radiant burner for 800mm roll diameter models.

OPTIONS FOR PHOENIX SERIES



COMPACT STACKER: 10/15 tablecloths
10 bed sheets



ROLL OFF COMPACT STACKER: 5 tablecloths
10 bed sheets



SMALL PIECES BACK COLLECTOR 2 LANES



COMPACT STACKER + SMALL PIECES BACK COLLECTOR 2 LANES + SMARTY

POSEIDON AND POLARIS COMPACT FLATWORK IRONERS

These ironers are the least complex and least costly models from the whole FAGOR range of high production ironers. They are mural and compact machines, which offer an output of up to 290 kg/h.

POSEIDON models come with an in-built length folder. This can make up to 2 length folds in 2 independent working lanes, if the user chooses this option. The folds are done by means of photocells and compressed air, ensuring a perfect fold. POLARIS models on the other hand are drying-ironing with an option of working as pass-through ironers, without making any fold.



Poseidon



POSEIDON AND POLARIS HIGH PRODUCTION COMPACT MACHINES

FEATURES

- Roll sizes: 2600 and 3300 mm wide and 600, 800 and 1000 mm diameter.
- Panels in painted steel.
- One or two working lanes: one lane for bedsheets and two lanes for tablecloths and small pieces.
- Length fold with 1 or 2 folds in two independent lanes (POSEIDON).
- Folding by photocells and compressed air.
- Frequency control.
- Feeding and ironing belts are Nomex.
- Touch-screen control: programs can be created with speed control (between 3 and 18 mts/min), temperature and folding parameters (POSEIDON).
- Big output capacity, depending on the residual moisture of the linen, up to 290 kg/hour straight from the high spin washer extractor.
- Electric, gas or steam heating.
- Powerful exhaust System.
- New radiant burner for 800 mm roll diameter models.

OPTIONS

- Automatic 1 lane clamp feeder with vacuum feeding belts.
- Small pieces back collector: 2 or 4 lanes.
- Vacuum table to help the linen feeding.
- Linen reject System.
- Double air pressure in length folds for thicker linen.
- Rear delivery of the linen with collection table.
- New radiant burner for 800 mm roll diameter models.



Polaris



TECHNICAL DATA

PHOENIX IRONERS

COMPACT FLATWORK IRONERS | PHOENIX

		60/260	60/330	80/260	80/330	100/260	100/330	
GENERAL DETAILS								
THEORETICAL PRODUCTION HUMIDITY 45-50% HUMIDITY	kg/h *	75-105	110-140	140-175	180-220	190-230	250-290	
THEORETICAL PRODUCTION HUMIDITY 45-50% HUMIDITY (RADIATING GAS)	kg/h *	-	-	165-200	210-260	230-275	300-350	
Ø ROLL	mm	600	600	800	800	1000	1000	
WORKING WIGTH	mm	2600	3300	2600	3300	2600	3300	
HEIGHT FLOOR-FEEDING	mm	1100	1100	1110	1110	1110	1110	
WORKING SPEED	mt/min	3-10	3-10	3-13	3-13	4-18	4-18	
CONTROL TYPE		Touch	Touch	Touch	Touch	Touch	Touch	
PROGRAMMES	Nº	20	20	20	20	20	20	
SIDE STACKER		Yes	Yes	Yes	Yes	Yes	Yes	
FOLDING								
1 LANE - PRIMARY FOLD	Nº	1-2	1-2	1-2	1-2	1-2	1-2	
1 LANE - CROSS FOLD	Nº	1-2-3	1-2-3	1-2-3	1-2-3	1-2-3	1-2-3	
2 LANES - PRIMARY FOLD	Nº	1-2	1-2	1-2	1-2	1-2	1-2	
2 LANES - CROSS FOLD	Nº	1-2	1-2	1-2	1-2	1-2	1-2	
POWER								
ELECTRIC	HEATING POWER	kw	60	60	75	75	90	90
	TOTAL ELECTRIC POWER	kw	63,1	63,1	78,5	78,5	93,9	93,9
GAS	HEATING POWER	kw	65	82	89	127	120	156
	TOTAL ELECTRIC POWER	kw	3,1	3,1	3,5	3,5	3,9	3,9
STEAM	HEATING POWER	kw	55	75	85	110	120	150
	TOTAL ELECTRIC POWER	kw	3,1	3,1	3,5	3,5	3,9	3,9

COMPACT FLATWORK IRONERS | PHOENIX

		60/260	60/330	80/260	80/330	100/260	100/330
CONNECTIONS							
Ø GAS INLET	BSP	1"	1"	1"	1"	1"	1"
Ø STEAM INLET	BSP	1"	1"	1"	1"	1-1/4"	1-1/4"
Ø CONDENSED (STEAM MOD.)	BSP	1/2"	1/2"	1/2"	1/2"	1"	1"
Ø AIR INLET	mm	12	12	12	12	12	12
DIMENSIONS							
WIDTH	mm	3718	4418	3718	4418	3718	4418
DEPTH	mm	2209	2209	2209	2209	2289	2289
HEIGHT	mm	1810	1810	2080	2080	2279	2279
WEIGHT	Kg	2686	3080	3350	3730	3960	4460
VOLUME	m³	14,87	17,66	17,08	20,30	19,40	23,05
DIMENSIONS WITH PACKAGING							
WIDTH	mm	3800	4500	3800	4500	3800	4500
DEPTH	mm	2300	2300	2300	2300	2380	2380
HEIGHT	mm	2060	2060	2330	2330	2529	2529
WEIGHT	kg	3050	3680	3750	4330	4410	5110
VOLUME	m³	18,00	21,32	20,36	24,12	22,87	27,09
OTHERS							
Nº FUME OUTLET	Nº	2	2	2	2	2	2
Ø FUME OUTLET	mm	120	120	120	120	120	120
AIR FLOW	m³/h	2x1000	2x1000	2x1000	2x1000	2x1000	2x1000
AIR CONSUMTION (6,5 BAR)	NI/h	15000	15000	19000	19000	21000	21000
NOISE LEVEL	dB	< 70	< 70	< 70	< 70	< 70	< 70

STACKERS

	UNIT.	SIDE STACKER	COMPACT SIDE STACKER	STACKER SMALL ITEMS 2 LANES	STACKER SMALL ITEMS 4 LANES
ELECTRIC POWER	kW	0,36	0,36	0,37	0,37
AIR CONSUMTION (6,5 BAR)	NI/h	1080	1080	600	600
NET DIMENSIONS	mm	1365x2476x1200	685x2385x660	1871x535x842	3490x535x842
NET WEIGHT	kg	450	160	100	160
GROSS DIMENSIONS	mm	1400x2350x1400	800x2300x850	1920x600x1042	3540x600x1042
GROSS WEIGHT	kg	600	230	180	280

TECHNICAL DATA

POSEIDON AND POLARIS IRONERS

		POSEIDON						POLARIS						
		60/260	60/330	80/260	80/330	100/260	100/330	60/260	60/330	80/260	80/330	100/260	100/330	
GENERAL DETAILS														
THEORICAL PRODUCTION 45-50% HUMIDITY	kg/h *	75-105	110-140	140-175	180-220	190-230	250-290	75-105	110-140	140-175	180-220	190-230	250-290	
THEORICAL PRODUCTION 45-50% HUMIDITY (RADIATING GAS)	kg/h *	-	-	165-210	215-260	220-270	300-350	-	-	165-210	215-260	220-270	300-350	
Ø ROLL	mm	600	600	800	800	1000	1000	600	600	800	800	1000	1000	
WORKING WIGHTH	mm	2600	3300	2600	3300	2600	3300	2600	3300	2600	3300	2600	3300	
HEIGHT FLOOR-FEEDING	mm	1050	1050	970	970	1050	1050	1050	1050	970	970	1050	1050	
WORKING SPEED	mt/min	3-10	3-10	3-13	3-13	4-18	4-18	3-10	3-10	3-13	3-13	4-18	4-18	
CONTROL TYPE		Touch	Touch	Touch	Touch	Touch	Touch	Touch	Touch	Touch	Touch	Touch	Touch	
PROGRAMMES	Nº	20	20	20	20	20	20	-	-	-	-	-	-	
SIDE STACKER		-	-	-	-	-	-	-	-	-	-	-	-	
FOLDING														
1 LANE · PRIMARY FOLD	Nº	1-2	1-2	1-2	1-2	1-2	1-2	-	-	-	-	-	-	
1 LANE · CROSS FOLD	Nº	-	-	-	-	-	-	-	-	-	-	-	-	
2 LANES · PRIMARY FOLD	Nº	1-2	1-2	1-2	1-2	1-2	1-2	-	-	-	-	-	-	
2 LANES · CROSS FOLD	Nº	-	-	-	-	-	-	-	-	-	-	-	-	
POTENCIAS														
ELECTRIC	HEATING POWER	kw	60	60	75	75	90	90	60	60	75	75	90	90
	TOTAL ELECTRIC POWER	kw	61,9	61,9	77,2	77,2	92,6	92,6	61,9	61,9	77,2	77,2	92,6	92,6
GAS	HEATING POWER	kw	65	82	89	127	117	156	65	82	89	127	117	156
	TOTAL ELECTRIC POWER	kw	1,9	1,9	2,2	2,2	2,6	2,6	1,9	1,9	2,2	2,2	2,6	2,6
STEAM	HEATING POWER	kw	55	75	85	110	120	150	55	75	85	110	120	150
	TOTAL ELECTRIC POWER	kw	1,9	1,9	2,2	2,2	2,6	2,6	1,9	1,9	2,2	2,2	2,6	2,6

		POSEIDON						POLARIS					
		60/260	60/330	80/260	80/330	100/260	100/330	60/260	60/330	80/260	80/330	100/260	100/330
CONNECTIONS													
Ø GAS INLET	BSP	1"	1"	1"	1"	1"	1"	1"	1"	1"	1"	1"	1"
Ø STEAM INLET	BSP	1"	1"	1"	1"	1-1/4"	1-1/4"	1"	1"	1"	1"	1-1/4"	1-1/4"
Ø CONDENSED (STEAM MOD.)	BSP	½"	½"	½"	½"	1"	1"	½"	½"	½"	½"	1"	1"
Ø AIR INLET	mm	12	12	12	12	12	12	12	12	12	12	12	12
DIMENSIONS													
WIDTH	mm	3674	4374	3786	4486	3786	4486	3674	4374	3786	4486	3786	4486
DEPTH	mm	1445	1445	1770	1770	1985	1985	1445	1445	1770	1770	1985	1985
HEIGHT	mm	1810	1810	1980	1980	2180	2180	1810	1810	1980	1980	2180	2180
WEIGHT	Kg	2050	2300	2535	2835	3350	3950	1800	2050	2350	2550	3100	3700
VOLUME	m³	9,61	11,44	13,27	15,72	16,38	19,41	9,61	11,44	13,27	15,72	16,38	19,41
DIMENSIONS WITH PACKAGING													
WIDTH	mm	3760	4460	3870	4570	3870	4570	3760	4460	3870	4570	3870	4570
DEPTH	mm	1540	1540	1860	1860	2070	2070	1540	1540	1860	1860	2070	2070
HEIGHT	mm	2060	2060	2230	2230	2380	2380	2060	2060	2230	2230	2380	2380
WEIGHT	kg	2300	2600	2885	3335	3800	4500	2050	2350	2700	3050	3550	4250
VOLUME	m³	11,93	14,15	16,05	18,96	19,07	22,51	11,93	14,148904	16,05	18,96	19,07	22,51
OTHERS													
Nº FUME OUTLET	Nº	2	2	2	2	2	2	2	2	2	2	2	2
Ø FUME OUTLET	mm	120	120	120	120	120	120	120	120	120	120	120	120
AIR FLOW	m³/h	2x1000	2x1000	2x1000	2x1000	2x1000	2x1000	2x1000	2x1000	2x1000	2x1000	2x1000	2x1000
AIR CONSUMTION (6,5 BAR)	Nl/h	7000	7000	9000	9000	9500	9500	5000	5000	5000	5000	5000	5000
NOISE LEVEL	dB	< 70	< 70	< 70	< 70	< 70	< 70	< 70	< 70	< 70	< 70	< 70	< 70

FOLDERS

FOLDERS		SMARTY	SMARTY MINI
MIN. GARMENT GIZE	mm	--	--
MAX. GARMENT SIZE	mm	570x1000	570x600
OUTPUT	units/h	1200	900
ELECTRIC POWER	kW	1,07	0,98
COMPRESSED AIR	Nl/h	5200	5200
NET DIMENSIONS	mm	605x4235x1340	605x2835x1340
GROSS DIMENSIONS	mm	650x3350x1540	650x2860x1540

ⓘ 50% residual humidity, 140 gr/m2 cotton, 100% roll surface used, - Technical data may change without prior notice.

FAGOR INDUSTRIAL S. COOP.
Santxolopetegi auzoa, 22
20560 Oñati, Gipuzkoa (Spain)
T. (+34) 943 71 80 30
F. (+34) 943 71 81 81
info@fagorindustrial.com

www.fagorindustrial.com

